

GG PUTTERS

Custom, high-performance putters

Made In Italy



WWW.GGPUTTERS.COM



CONTENTS

ABOUT US	4
KEY FEATURES	5
ANTARES	8
ORION	9
RANGE	11
BALANCE COMBINATIONS	12
CLUBFACES	16
ACCESSORIES	17
CONTACTS	18



GG PUTTERS - GRAVITY GOLF

GG PUTTERS fuses science and precision, inspired by the universe. The mirrored “G”s in our logo reflect the balance and control behind every stroke. With adjustable weight positioning, our putters deliver custom performance.

Born in Brescia, Italy, we carry a legacy of metalworking and a forward-looking vision. Italian craftsmanship drives us—not to follow tradition, but to reinvent it with passion and innovation.

KEY FEATURES

1 DESIGN

Each GG Putter is the perfect balance between functional design and artisanal mastery. Milled from a single block of aluminum and seamlessly combined with steel components, it delivers solidity, control, and exceptional feel.

2 TRAJECTORY

Unlike traditional putters, the trajectory is not elliptical but straighter, thanks to the special designed face, making your stroke more accurate and reliable. A straighter roll means more putts holed – with confidence.

3 MODULARITY

Antares and Orion putters let every golfer find their ideal setup with multiple lie and offset options. Loft can be adjusted by adding extra faces, while additional light or heavy weights allow for even more custom weight combinations.

4 WEIGHT

At the core of the GG Putter lies its adjustable weighting system: you can choose how to position the three weights across the dedicated weight points to find the ideal arc stroke that best suits your game.

5 MADE IN ITALY

Every detail, every finish, is carefully refined by our expert hands in Brescia, Italy, a city renowned for its centuries-old excellence in metalworking.

OUR PRODUCTS



ANTARES

Blade Putter



Club Type: Blade Putter

Balancing: Toe Hang

Standard Weights: 1 Aluminium,
2 Stainless Steel

Body Material: Aluminium

Clubface Material: Stainless Steel

Clubhead Weight: 320g (11,28 oz)

Hand: Left, Right

Grip Size: Medium, Jumbo

Lie: 68° to 72°

Loft: 1° to 5°

Offset: Full, Half, No offset



ORION

Mallet Putter



Club Type: Mallet Putter

Balancing: Face Balanced

Standard Weights: 1 Aluminium,
2 Stainless Steel

Body Material: Aluminium

Clubface Material: Stainless Steel

Clubhead Weight: 368g (12,98oz)

Hand: Left, Right

Grip Size: Medium, Jumbo

Lie: 68° to 72°

Loft: 1° to 5°

Offset: Full, Half, No offset



RANGE

Offset and Lie options for our putters: each letter indicates a neck with its specific offset and lie.

LEFT			RIGHT	
OFFSET	LIE	NECK	LIE	OFFSET
HALF SHAFT	72	A	68	HALF SHAFT
FULL SHAFT	72	B	68	FULL SHAFT
NO OFFSET	72	C	68	NO OFFSET
HALF SHAFT	71	D	69	HALF SHAFT
FULL SHAFT	71	E	69	FULL SHAFT
NO OFFSET	71	F	69	NO OFFSET
HALF SHAFT	70	G	70	HALF SHAFT
FULL SHAFT	70	H	70	FULL SHAFT
NO OFFSET	70	I	70	NO OFFSET
HALF SHAFT	69	L	71	HALF SHAFT
FULL SHAFT	69	M	71	FULL SHAFT
NO OFFSET	69	N	71	NO OFFSET
HALF SHAFT	68	O	72	HALF SHAFT
FULL SHAFT	68	P	72	FULL SHAFT
NO OFFSET	68	Q	72	NO OFFSET

Our Lie options are: 68°, 69°, 70°, 71°, 72°.

Our offset options are: Full shaft, Half shaft, and No offset.

You can choose your preferred options at the time of purchase.

BALANCE COMBINATIONS



BALANCE COMBINATIONS

The standard weights of our putters are:

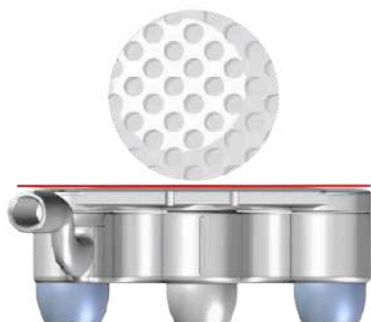
1 aluminum 26g (0,91oz), and 2 stainless steel 54g (1,97oz).

STANDARD OPTIONS WITH INCLUDED WEIGHTS:



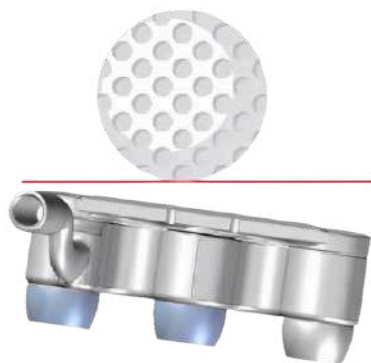
TENDS TO CLOSE

If stainless steel weights are on the outside, then the clubface will close.



REMAINS NEUTRAL

If the aluminium weights is in the middle, then the clubface remains neutral.



TENDS TO OPEN

If the stainless steel weights are on the inside, then the clubface will open.

BALANCE COMBINATIONS

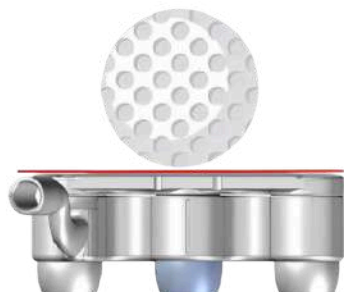
BY PURCHASING 1 EXTRA ALUMINIUM WEIGHT:



Tends to close

TENDS TO CLOSE

If stainless steel weight is on the outside, then the clubface will close.



Remains neutral

REMAINS NEUTRAL

If the stainless steel weights is in the middle, then the clubface remains neutral.



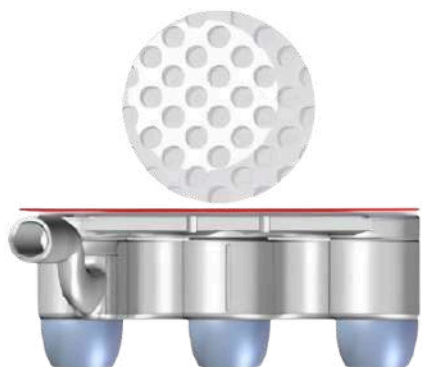
Tends to open

TENDS TO OPEN

If the stainless steel weights are on the inside, then the clubface will open.

BALANCE COMBINATIONS

**BY PURCHASING 1 EXTRA STAINLESS STEEL WEIGHT
OR 2 EXTRA ALUMINIUM WEIGHTS:**



HEAVYWEIGHT

3 stainless steel weights by
purchasing 1 extra steel
weight



LIGHTWEIGHT

3 aluminium weights by
purchasing 2 extra
aluminium weights.

INTERCHANGABLE FACES

If desired, the golfer can also vary the loft by purchasing extra clubfaces

Loft available: 1°, 2°, 3°, 4°, 5°.



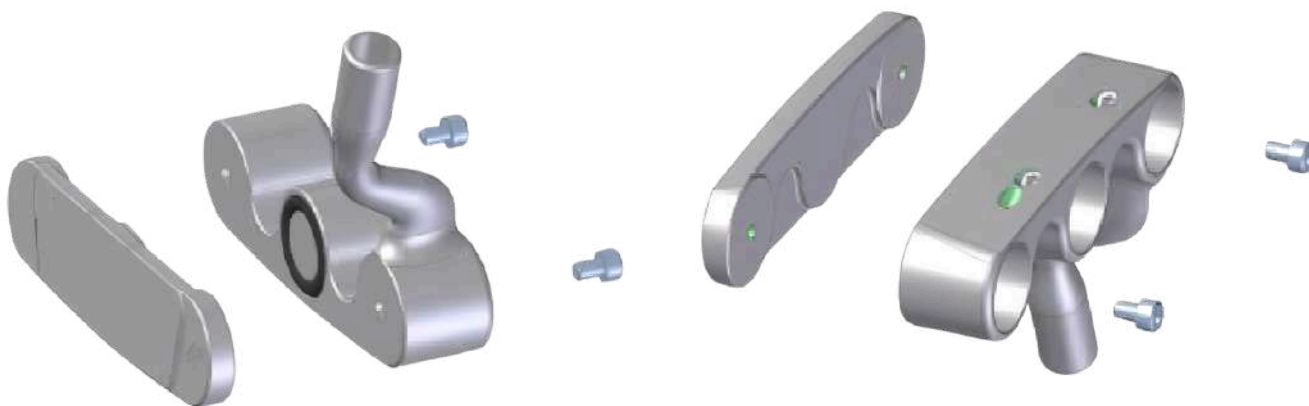
Front View



Face Inclination

HOW TO CHANGE THE FACE

To optimize your putter, adjust its clubface by loosening the screws with a torque wrench, swapping the face, and then tightening the screws until you hear the click, indicating they're secure.



ACCESSORIES

ACCESSORIES AVAILABLE FOR PURCHASE:

- Additional weights: aluminum (26g / 0.91 oz) and stainless steel (54g / 1.97 oz).
- Extra clubfaces available with lofts from 1° to 5°.
- Torque wrench: a precision tool for easy assembly and disassembly.

CUSTOM OPTIONS DURING INITIAL CONFIGURATION:

- Lie angle selectable from 68° to 72°.
- Available for both right-handed and left-handed players.
- Choice of grip size: Medium or Jumbo.



EXTRA WEIGHTS



CLUBFACES



TORQUE WRENCH

CONTACT US

EMAIL: INFO@GGPUTTERS.COM

PHONE: +39 349 604 2678

INSTAGRAM: [@GG.PUTTERS](https://www.instagram.com/GG.PUTTERS)

FACEBOOK: GG PUTTERS

WEBSITE: WWW.GGPUTTERS.COM

ADDRESS:

VIA TARANTO 7, PALAZZOLO SULL'OGGIO,
BRESCIA 25036, ITALY

